

River Ridge Tract 22F

230 Paul Garrett Avenue, Jeffersonville, IN

www.cbre.com/louisville

81,482+/- SF



Property Highlights

- 81,482+/- SF available
- 6.31+/- acres
- BTS office area
- 8 equipped dock doors, expandable to 14
- 1 (12' X 14') drive-in door
- 71 car parking spaces, expandable to 84
- 11 truck parking spaces
- 32' clear height
- LED lighting
- ESFR sprinkler system
- 4.5 miles to I-265
- 7 miles to I-65
- 10.2 miles to I-71
- Contact agent for pricing

Contact Us

Alex P. Grove
Vice President
+1 502 412 7655
alex.grove@cbre.com

Kevin A. Grove, CCIM, SIOR
Executive Vice President
+1 502 412 7615
kevin.grove@cbre.com

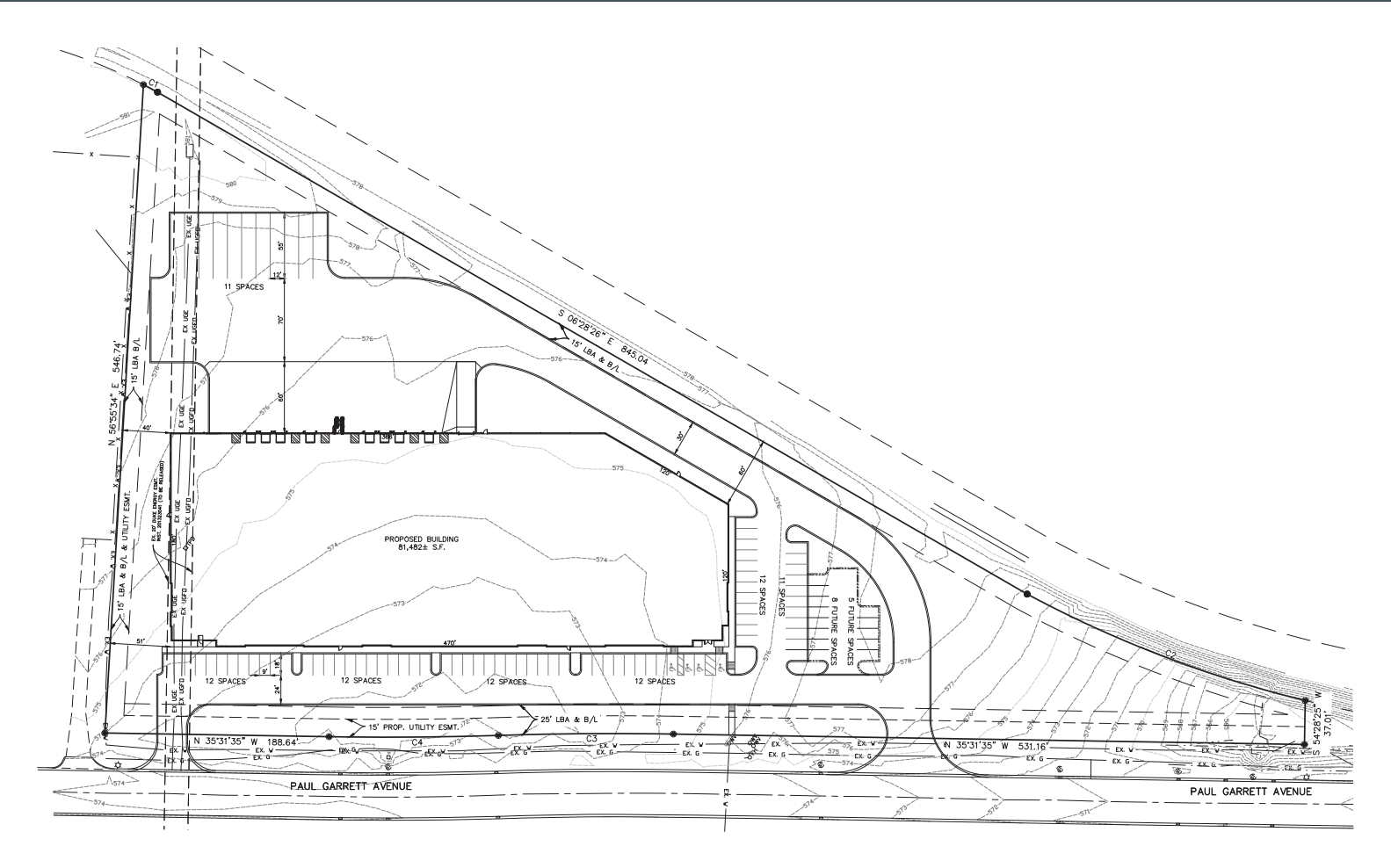
River Ridge Tract 22F

Jeffersonville, IN

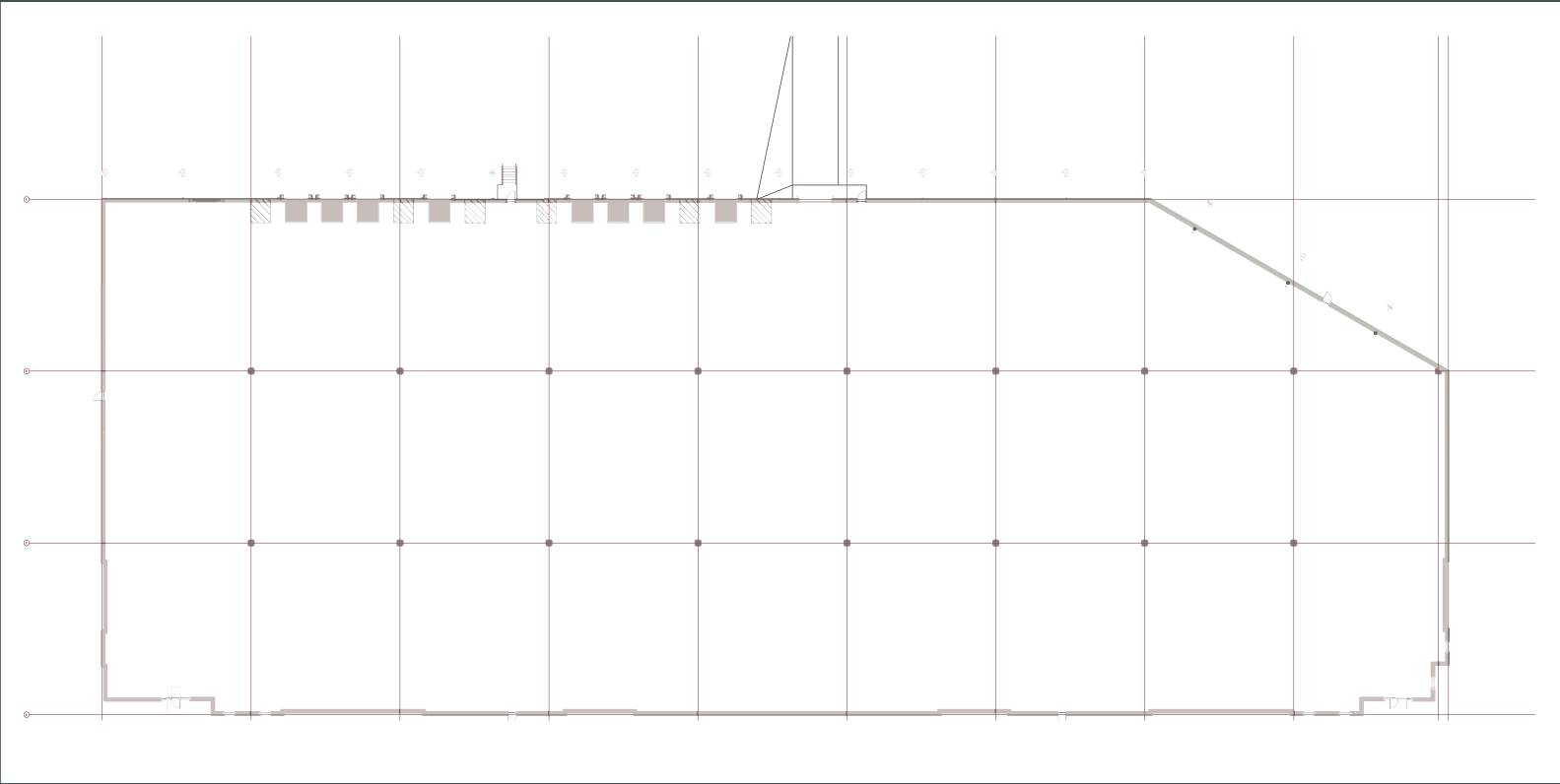
BUILDING 1 SPECS

Available Space	81,482+/- square feet
Office Area	BTS
Construction Type	Concrete Tilt Wall
Clear Height	32'
Fire Suppression	ESFR
Dock Doors	(8) 9' X 10' (equipped, expandable to 14)
Drive-In Doors	(1) 12' X 14'
Column Spacing	60' X 52'
Speed Bay	60'
Lighting	LED
Electric	2,000 amp, 480/277v
Roof	45 Mil TPO with 15 year warranty
Truck Court	130'
Car Parking	71 spaces
Trailer Parking	11 spaces
Slab	6" unreinforced concrete slab
Zoning	I-R
Floor Loading	4000 PSI

SITE PLAN

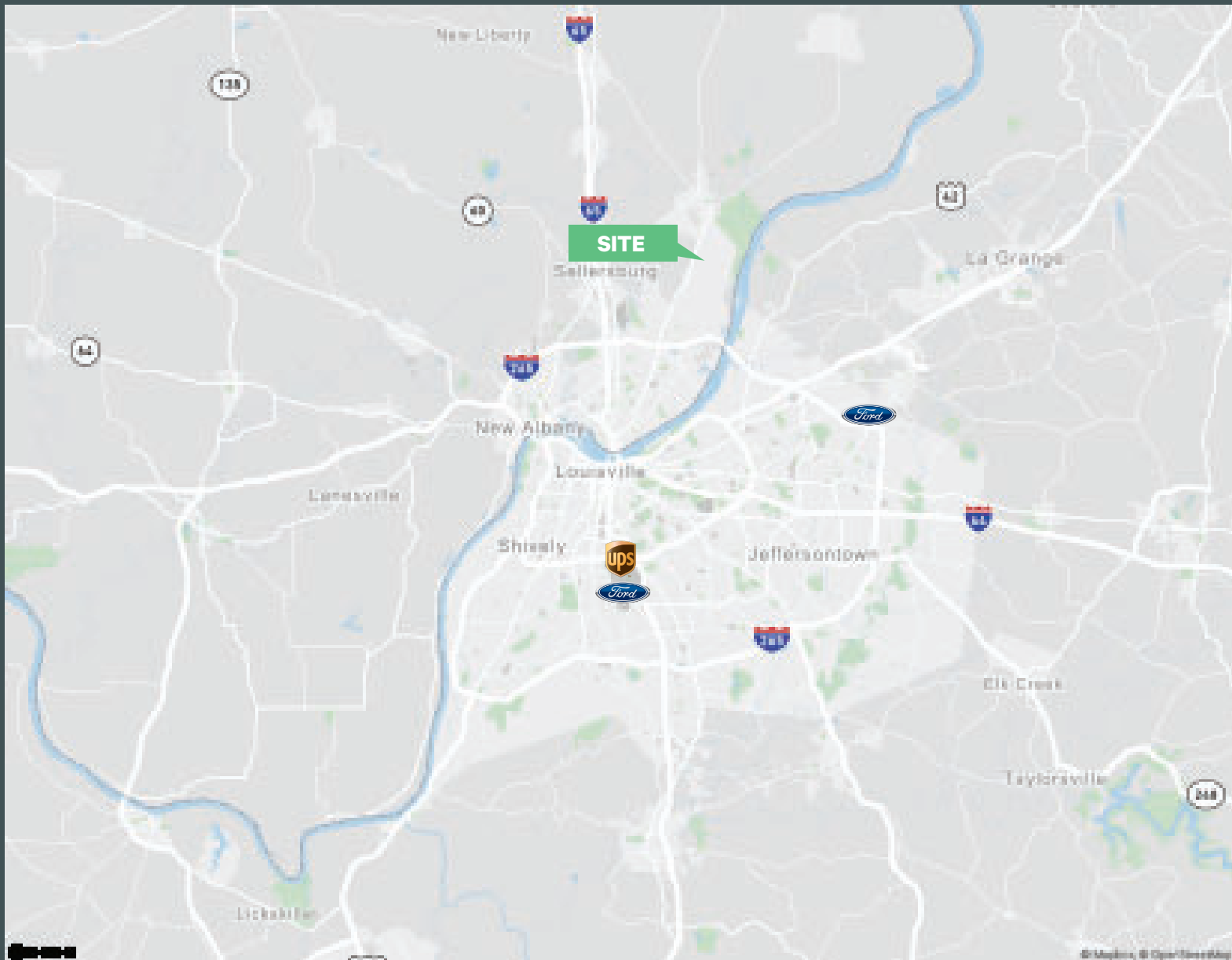


FLOOR PLAN



River Ridge Tract 22F

Jeffersonville, IN



Contact Us

Alex P. Grove

Vice President

+1 502 412 7655

alex.grove@cbre.com

Kevin A. Grove, CCIM, SIOR

Executive Vice President

+1 502 412 7615

kevin.grove@cbre.com

© 2024 CBRE, Inc. All rights reserved. This information has been obtained from sources believed reliable, but has not been verified for accuracy or completeness. You should conduct a careful, independent investigation of the property and verify all information. Any reliance on this information is solely at your own risk. CBRE and the CBRE logo are service marks of CBRE, Inc. All other marks displayed on this document are the property of their respective owners, and the use of such logos does not imply any affiliation with or endorsement of CBRE. Photos herein are the property of their respective owners. Use of these images without the express written consent of the owner is prohibited.